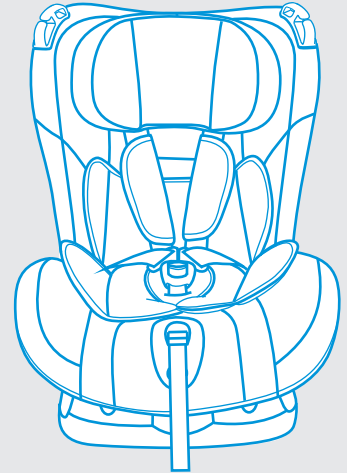


# INSTRUCTIONS FOR USE

**CHILD RESTRAINT LM216**  
**GROUP 0+,I,II**  
SUITABLE FOR CHILDREN  
FROM 0 TO 25KG



## NOTICE

1. This is a "Universal" child restraint, it is approved to Regulation NO. 44.04 series of amendments, for general use in vehicles and it will fit most, but not all, car seats.
2. A correct fit is likely if the vehicle manufacturer has declared in the vehicle handbook that the vehicle is capable of accepting a "Universal" child restraint for this age group.
3. This child restraint has been classified as "Universal" under more stringent conditions than those which applied to earlier designs which do not carry this notice.
4. If in doubt, consult either the child restraint manufacturer or the retailer.

Only suitable if the vehicle is fitted with 3-point safety belts, Approved to UN/ECE Regulation No. 16 or other equivalent standards.

## Contents

1. <b>Vital information-READ NOW</b> .....	1-2
2. <b>Applicability</b> .....	3
3. <b>Safety instruction</b> .....	3
4. <b>Using safety seat in this way</b> .....	4
5. <b>Parts and interior equipment</b> .....	5
6. <b>Installing the safety group 0+</b> .....	6-10
7. <b>Installing the safety group I</b> .....	10-11
8. <b>Installing the safety group II</b> .....	12-13
9. <b>Instructions for use of cushion</b> .....	14
10. <b>How to dispose</b> .....	14
11. <b>Washing instructions</b> .....	14

### 1. Vital information-READ NOW

1. The customer can write to the address printed on the box to obtain future information on fitting the child restraint in specific cars.
2. The rigid items and plastic parts of a child restraint must be so located and installed that they are not liable, during everyday use of the vehicle to become trapped by a movable seat or in a door of the vehicle.
3. Any straps holding the restraint to the vehicle should be tight; that any straps restraining the child should be adjusted to the child's body; and that straps should not be twisted.
4. The instructions can be retained on the child restraint for its life period.

5. Do not use any load bearing contact points other than those described in the instructions and marked in the child restraint.
6. Any lap strap is worn low down, and the pelvis must be firmly engaged shall be stressed.
7. The device should be changed when it has been subject to violent stresses in an accident.
8. It is dangerous to make any alterations or additions to the device without the approval of the competent authority, and a danger of not following closely the installation instructions provided by the child restraint manufacturer.
9. When the chair is not provided with a textile cover, it should be kept away from sunlight, otherwise it may be too hot for the child's skin.
10. Children must not be left in their child restraint system unattended.
11. Any luggage or other objects liable to cause injuries in the event of a collision shall be properly secured.
12. The child restraint must not be used without the cover.
13. The seat cover can not be replaced with any other than the one recommended by the manufacturer, because the cover constitutes an integral part of the restraint performance.
14. **IMPORTANT-DO NOT** use forward facing before the child's weight exceeds 9kg.

## 2. Applicability

The child car seat is suitable for weight categories 0+ to II (Group 0+, I, II), which means children with a body weight between 0 kg and 25 kg

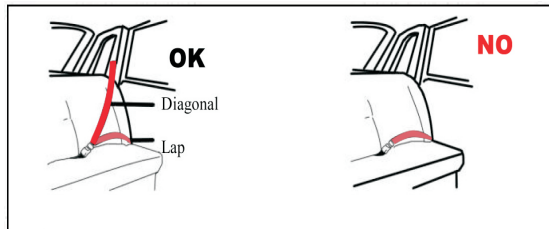
**Mass Group 0+ : 0-13kg**  
**Mass Group I : 9-18kg**  
**Mass Group II : 15-25kg**

This child car seat can be used with its harness system for children of weight group 0+, I. It must be secured with the belt fastener on the 3-point vehicle belt.

For children of weight categories II (15kg to 25kg) the harness system must be removed and the vehicle's 3-point belt system used to secure the child.

## 3. Safety instruction

Only suitable if the approved vehicles are fitted with 3 point safety-belts, approved to UN/ECE Regulation No. 16 or other equivalent standards.



## 4. Using safety seat in this way

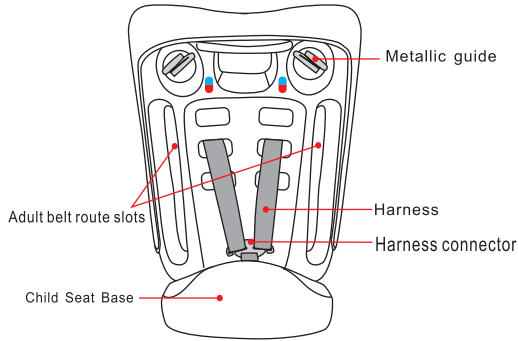
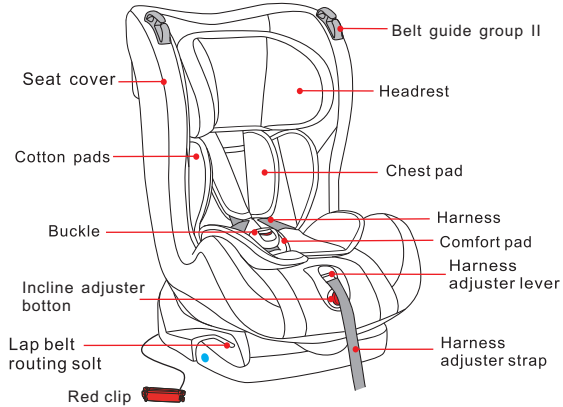
Forward facing traffic direction	Correct
Back facing traffic direction	Error
Vehicle is only fitted with 2-point safety belt	Error
Vehicle is fitted with 3-point safety belt	Correct
Seat beside the driver	Correct
Rear seat	Correct
Rear middle seats Three-point Belt	Correct

### 4.1 Please carefully implement the Country Traffic Safety Regulations

1. Do not use child restraint system in seating positions where there is an air bag installed.
2. Please read the instruction manual carefully that how to use the airbag.



## 5. Parts and interior equipment



## 6. Installing the safety group 0+

The harness system is only permitted for children of group 0+, Which means from 0 kg to 13 kg to use.

### 6.1 Setting the shoulder belt height(group 0+)

Check whether the shoulder belts are set at the right height for your child. The shoulder belts should be fed into the belt slots that lie at shoulder height or just above.



If the height of your shoulder belts in child car seat is not fit for your child, Adjust the height of the shoulder belts, please proceed as follows:

**Step 1:** loosen the harness(see piont 6.3),turn the child seat to the back.

**Step 2:** Slide both of the harness off the harness connector (Fig. 2) .

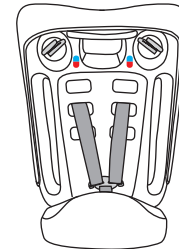


Fig. 1

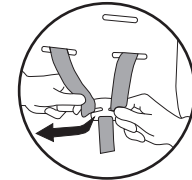


Fig. 2

## 6.2 Reverse installation

**Step 1.** For Group 0+, the safety position of the safety seat must only be used in the most reclined position (see Fig. 1/a). The safety seat must never be used in any other position (Fig. 1/b). To adjust the reclining position of the safety seat, press the red incline adjuster button (Fig. 2), until you reach the required position (Fig. 3).

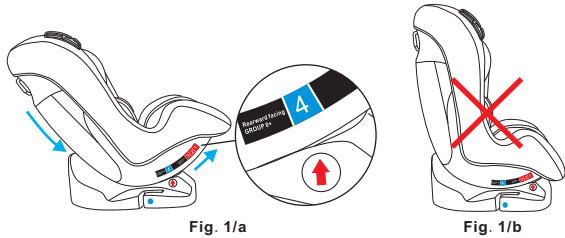


Fig. 1/a

Fig. 1/b

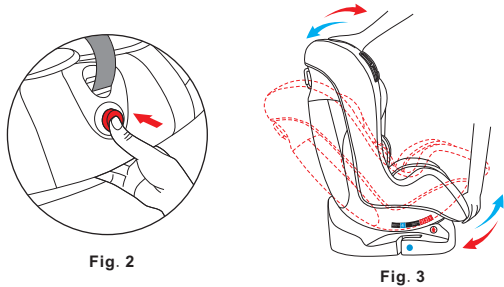


Fig. 2

Fig. 3

**Step 2.** The seat must always be rearfacing (Fig. 4/a). If your car has an airbag on the passenger seat, the safety seat must only be used on the rear seat.

**Step 3.** secure the safety seat onto the car seat using the car seat belt

**Step 4.** pass the lap part of the seat belt under the base of the safety seat (A) into the two points marked by a blue label and fasten the clip to the corresponding buckle (C)

**Step 5.** pass the upper diagonal part of the belt in the metallic guide (B)

**Step 6.** Place the red clip (D) on the shoulder belt directly upwards at the place where bassin and shoulder belt are splitted up.

**Step 7.** Make sure that the belt is not twisted and strongly tightened before you block the belt with the plastic clip.

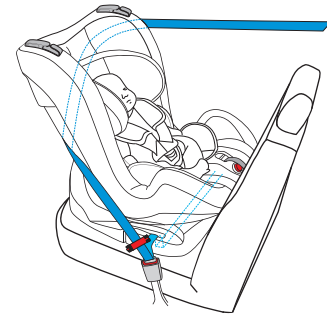


Fig. 4/a

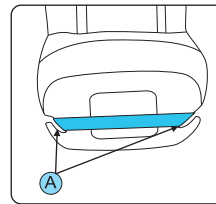


Fig. 4/b

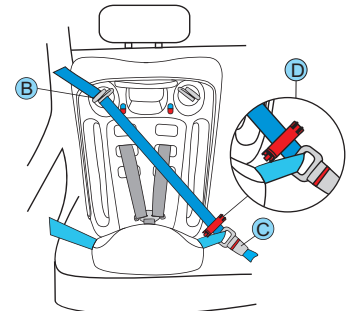


Fig. 4/c

### 6.3 Loosening the harness

- The harness is slackened by pressing the lever (under the seat cover) on the front of the seat.
- Press down on the label marked "Press" as you grip the two shoulder straps with your other hand. Pull the shoulder straps towards you to loosen the harness. (see the picture on the right)



### 6.4 Securing the child with the harness



- Firstly, adjust the shoulder belts height (see point 6.1), proceed as follows:
- Loosen the harness (see point 6.3), open the buckle (6.4.1), and place them down sideways.
- Place your child in the child car seat, Place both shoulder belts over your child's shoulders.
- Fasten the buckle (6.4.1).
- Pull the shoulder straps upwards to remove the slack from the lap sections of the harness then pull the adjuster strap until the harness is fully tightened.
- The harness should be adjusted as tightly as possible without causing discomfort to your child.

- A loose harness can be dangerous. Check the harness adjustment and tighten each time the child is placed in the seat.
- Ensure that any lap strap is worn low down, so that the pelvis is firmly engaged, the belt is not twisted.

### 6.4.1 Using the buckle

- Put two metal sections of the buckle connectors together. (fig. 1)
- Slot two buckle connectors into the slot in the top of the buckle until they "click" into place (fig. 2)
- Check if the harness is correctly locked by pulling the shoulder straps upwards (fig. 3 in pre. page).
- **To release the harness, press the red button on the buckle downwards.**

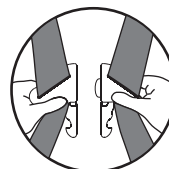


Fig. 1

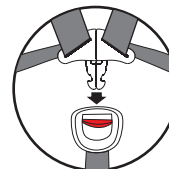


Fig. 2



Fig. 3

### 6.5 Height adjustment of head rest

Regularly check whether the head rest is optimal to your child. The height of the head rest is set optimally to the size of your child, when their head rests comfortably in the middle of the head rest (Fig. 1/a).

If the height of head rest in child car seat is not fit for your child, please adjust the head rest upward or downward (Fig. 1/b).

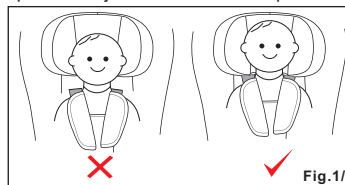


Fig. 1/a

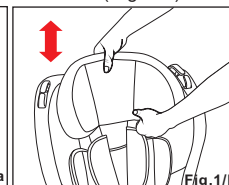


Fig. 1/b

## 7. Installing the safety group I

**Step 1.** For Group I, when positive installation the safety position of the safety seat, the biggest angle can be adjusted to the third, place the child seat on the seat of the vehicle, ensuring it is pressed firmly against the back of the vehicle seat.

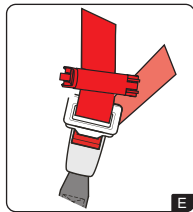
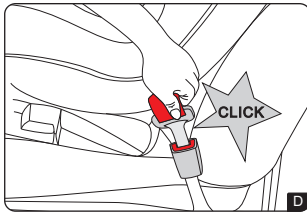
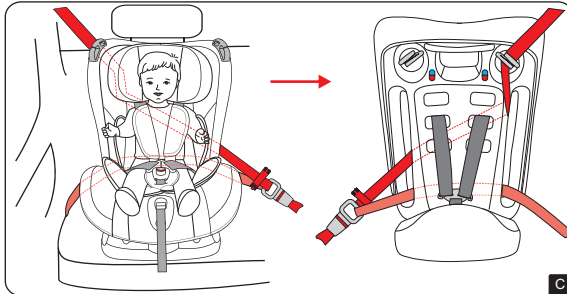
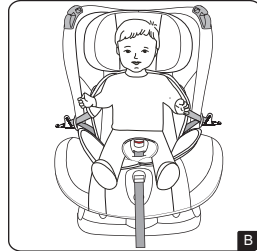
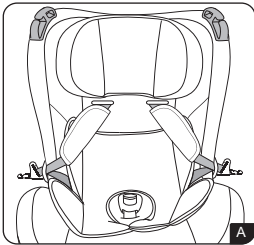
**Step 2.** Move the Buckle Tongues to the outsides of the cover. Secure the Buckle Tongues with the fixings located in the sides of the cover (A), then place the child on the child car safety seat (B).

**Step 3.** Fasten the child car seat in forward facing position on either the passenger or rear seat of your car by using the 3 point belt system which is installed in the car.

**Step 4.** Fasten the 3 point belt system (basin and shoulder belt) through the upper metallic guide afterwards fasten the buckle in the lock until a click is heard (D).

**Step 5.** At the same time the lap belt is pulled through the 2 plastic nibs(Fig.C).

**Step 6.** Place and fasten the red clip(E) on the shoulder belt directly upwards at the place where bassin and shoulder belt are splitted

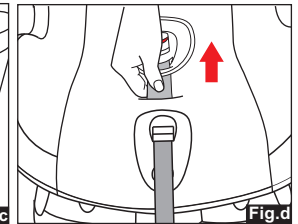
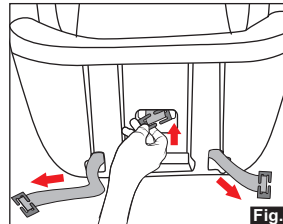
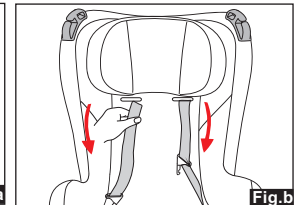
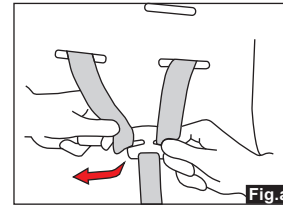


## 8. Installing the safety group II

The harness system must be moved from the seat(see point 8.1) when used for these age groups 15kg-25kg. Only the 3-point vehicle belt system can be used to buckle up the child car seat.

### 8.1 Remove the harness

- Loosening the harness(see 6. 3).
- To release the harness, press the red button on the buckle downwards(see point 6. 4.1).
- Slide both of the harness off the harness connector(Fig.a), take out the belt and remove the chest pad and buckle(Fig.b).
- Please adjust the seat to the biggest angle, you will see the steel under the car seat(Fig.c).then, you can pull out the harness from the solt which under the car seat(Fig.c).
- Pull the strap till the steel pole gets out of the solt(Fig.c, Fig.d).



## 8.2 Securing the child car seat with vehicle's belt

The vehicle's 3-point belt system may only be used to buckle up children of the age groups II (15kg-25kg).

The harness system must be removed from the seat (see point 8.1) when used for these age groups 15kg-25kg.

**Step 1.** For Group II, when positive installation the safety position of the safety seat, the biggest angle only can be adjusted to the first (see Fig.1).

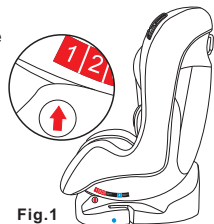


Fig.1

**Step 2.** Place the child safety seat on the vehicle's seat ensuring it is firmly pressed against the car seat backrest (Fig.2).

**Step 3.** Place your child in the child car seat.

**Step 4.** Pull out the 3-point vehicle belt, safety belt penetrates through the seat belt guide to better adapt to the boy on the shoulder position of the seat belt, to avoid injury to the child's neck and face, and then crossed the child and the child safety seat and allow it to lock in place. You will hear "click" (see fig.3)

**Step 5.** The final tightening safety belt and make sure the seat-belt is not twisted.

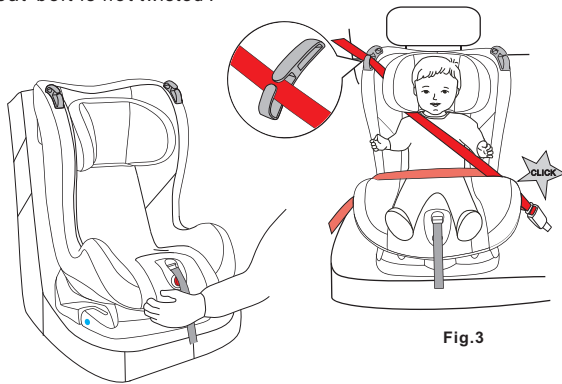
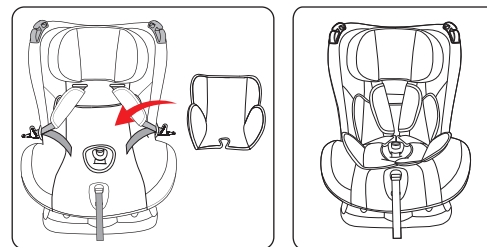


Fig.2

Fig.3

## 8. Instructions for use of cushion



**NOTICE:** Please use cushion for the child less than 15kgs  
Put cushion in child restraint system, and then adjust harness and cushion following the picture

## 9. How to dispose

- Please observe the waste treatment of the country.
- Please put the returnable plastics and mental parts into a corresponding returnable container.

## 10. Washing instructions

Use the original seat cover only and the non-original Cover will affect its function.

Do not use the child safety seat without seat cover.

● Use only water (under temperature of 30°C) with neutral detergent to wash the cover. Hang it in the shade after washing and do not wash by machine, spin dry or tumble dry is not recommended.

● Wash the plastic parts with warm water and neutral soap. Do not wash with chemicals.

Cover : polyester fibre 100%  
Filling : Polyurethane 100%



Maximum temperature of 30°C



Never use chlorine bleaches



Do not tumble dry



Do not wring



Never iron