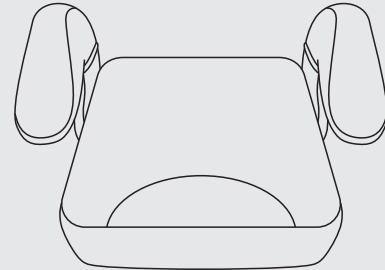


# INSTRUCTION FOR USE

Congratulations on your purchase of the child seat. Please read this instruction manual carefully before use. If you have any questions concerning the use of this child seat, please do not hesitate to contact us.

## BOOSTER SEAT



**LM221**

**GROUP II,III**

SUITABLE FOR CHILDREN

4 years to 12 years old

15~36KG

# Contents

1. Vital information-READ NOW.....	3-4
2. Safety instruction.....	5
3. Using safety seat in this way.....	5
4. Parts and interior equipment.....	6
5. <b>Installing the safety group II,III</b> .....	7 - 10
5.1 Isofit installation.....	7-8
5.2 3-point car seat belt installation.....	9 - 10
6. Unlock ISOFIT.....	10
7. Remove the cover.....	11
8. Maintenance and cleaning.....	12
8.1 Daily maintenance.....	12
8.2 Washing instruction.....	12

## Notice

1. This is a “universal” and “semi-universal” child restraint, it is approved to Regulation NO.44,04 series of amendments, for general use in vehicles and it will fit most, but not all, car seats.
2. A correct fit is likely if the vehicle manufacturer has declared in the vehicle handbook that the vehicle is capable of accepting a “Universal” child restraint for this age group.
3. This child restraint has been classified as “Universal” under more stringent conditions than those which applied to earlier designs which do not carry this notice.
4. If in doubt, consult either the child restraint manufacturer or the retailer.

**Only suitable if the vehicle is fitted with 3-point safety belts, Approved to UN/ECE Regulation No.16 or other equivalent standards.**

**This child restraint is classified for “(Semi-universal)” use and is suitable for fixing into the seat positions of the following cars:**

CAR	FRONT	REAR	
*	Outer	Outer	Centre
	NO	Yes	NO

Seat positions in other cars may also be suitable to accept this child restraint. If in doubt, consult either the child restraint manufacturer or the retailer.

## 1. Vital information-READ NOW

For your child’s safety, please read these instructions carefully before use and keep them for future reference. Failure to follow the instructions contained in this manual could result in serious injury to your child.

1. This child safety seat can only be used with the harness for children 9kg to 18kg in weight (group I: 9 - 18kg ; group II, III: 15-36 kg).
2. This instruction manual can be retained in the special space of the child seat for its life period.
3. Do not use this child safety seat at the home. It has not been designed for home use and should only be used in your car.
4. Never leave your child unattended in the child restraint system even for a short time.
5. The child safety seat should be changed when it has been subject to violent stresses in an accident.
6. This child restraint should be securely belted in the vehicle even when not in use. In a crash or sudden stop, an unsecured child safety seat may injure other occupants.
7. Always make sure that any straps holding the seat restraint to the vehicle shall be tight, any straps restraining the child should be adjusted to the child’s body, and check that the straps shall not be twisted.
8. **IMPORTANT!** Ensuring that any lap straps is worn low down, so that the pelvis is firmly engaged.
9. Do not use any load bearing contact points other than those described in the instructions and marked in the child restraint, when in doubt, please contact the child restraint manufacturer.
10. Any luggage or other objects liable to cause injuries in the event of a collision shall be properly secured.
11. The rigid items and plastic parts of a child restraint must be so located and installed that they are not liable, during everyday use of the vehicle to become trapped by a moveable seat or in a door of the vehicle.

12. To prevent from the risk of fall, your child should always be fastened.

13. It is dangerous to make any alteration or additions to the device without the approval of the competent authority, and a danger of not following closely the installation instructions provided by the child restraint manufacturer.

14. This child safety seat is designed for children from 9 to 36 kg. Never overload the child safety seat more than one child or with other loads.

15. The child restraint must not be used without the cover.

16. The seat cover should not be replaced with any other than the one recommended by the manufacturer, because the cover constitutes an integral part of the restraint performance.

17. Before you adjust any movable or adjustable parts of your child safety seat, you must remove your baby from the child safety seat.

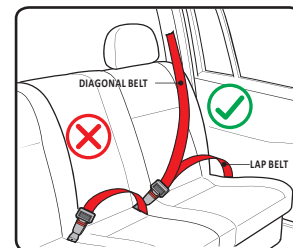
18. The child safety seat should be kept away from sunlight if the seat is not provided with a textile, otherwise it may be too hot for the child's skin.

19. Never use a second-hand product, as you can never be certain what was happened to it.

20. **Notice:** Do not use in any configuration not shown in the instructions.

## 2. Safety instruction

Only suitable if the approved vehicles are fitted with 3 point safety-belts, approved to UN/ECE Regulation No.16 or other equivalent standards.



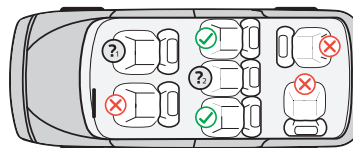
## 3. Using safety seat in this way

Forward facing traffic direction	Correct
Back facing traffic direction	Error
Vehicle is only fitted with 2-point safety belt	Error
Vehicle is fitted with 3-point safety belt	Correct
Seat beside the driver	Correct
Rear seat	Correct
Rear middle seats Three-point Belt	Correct

### 3.1 Please carefully implement the Country Traffic Safety Regulations

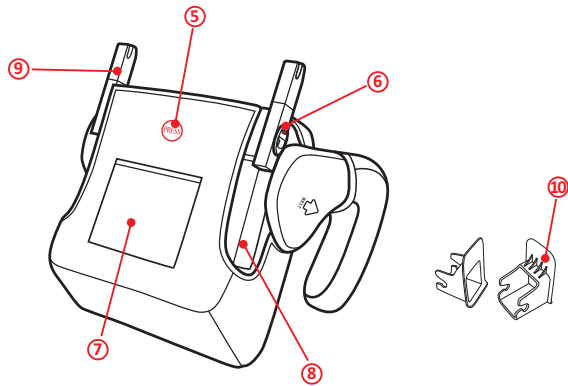
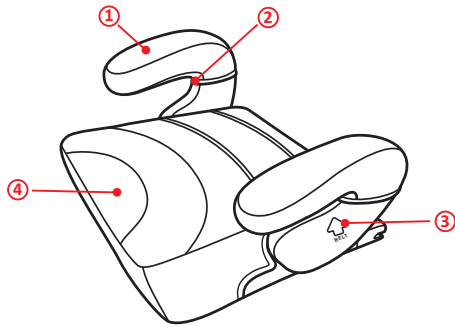
- Do not install the child safety seat at the front seat with airbag.
- Please read the instruction manual carefully that how to use the airbag.

### NOTICE



- ✓ You can install this position
  - ✗ Unable to install the position
  - ?
  - ?
  - ?
  - ?
- Do not install the child safety seat at the front seat with air bag.
- Only with the three point safety belt, can this location.

## 4. Parts and interior equipment



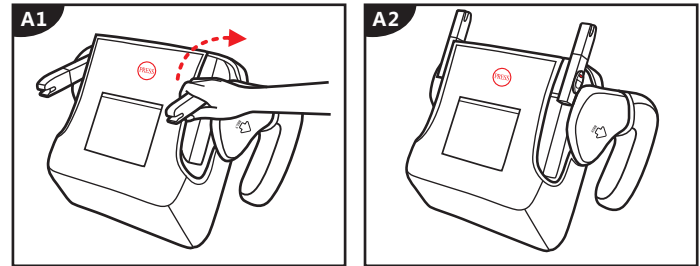
- |                           |                        |
|---------------------------|------------------------|
| ① Armrest and cloth cover | ⑥ Isofix unlock button |
| ② Belt slot               | ⑦ Manual bag           |
| ③ Belt slot label         | ⑧ Isofit hidden slot   |
| ④ Seat and cloth cover    | ⑨ Isofix connector     |
| ⑤ Isofit folding button   | ⑩ Isofix guide         |

## 5. Installing the safety group II,III

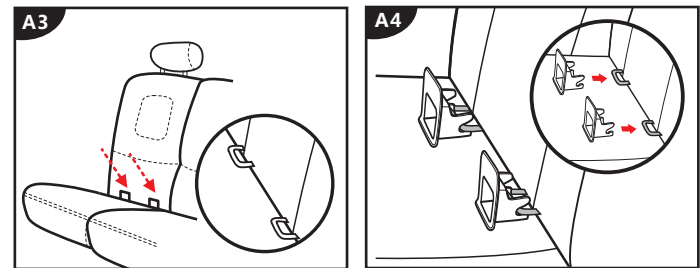
It is suitable for the weight 15-36kgs, given to children about 4 years-12 years old.

### 5.1 Installation: Isofit

#### Securing the child: 3-point car seat belt

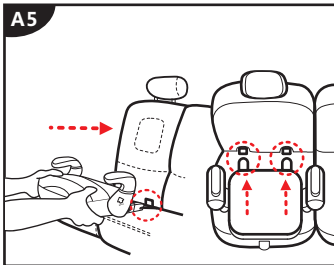


**Step 1:** Turn the seat to the bottom and pull out Isofix connector. (A1,A2)

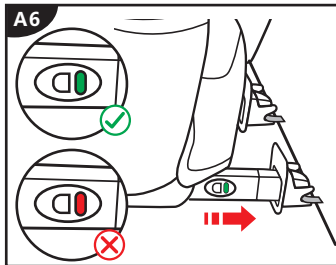


**Step 2:** Find out Isofix connections in the car.

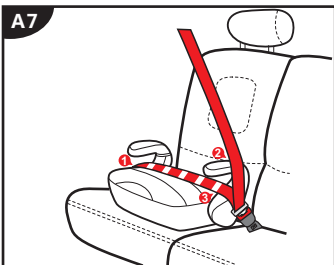
**Step 3:** Insert Isofix guide into Isofix connection.



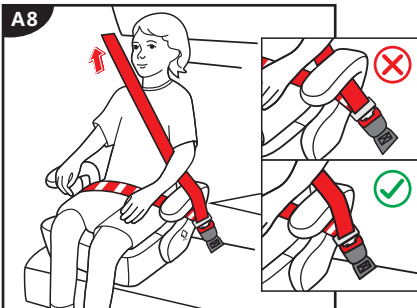
**Step 4:** Push child seat follow the direction and insert isofit connector into isofix guide. ( A5,A6).



**Step 5:** Check if isofit locking system turns to green and make sure child seat is firmly connected.

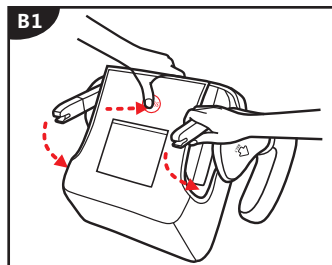


**Step 6:** Follow the A7 routine to install the baby car seat.

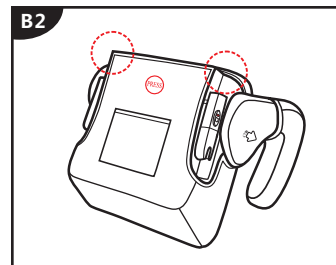


**Step 7:** Put the child in the seat and follow A7 routine.

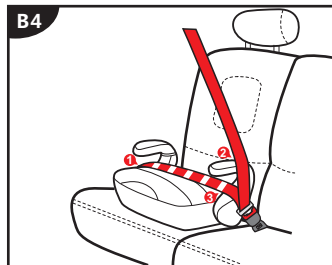
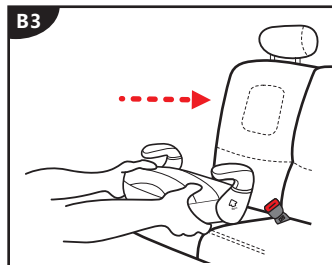
## 5.2 Installation: 3-point car seat belt Securing the child: 3-point car seat belt



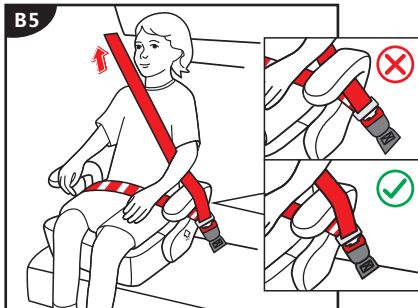
**Step1:** Press the button on the bottom and turn isofit connector to hide.



**Step 2:** Place the baby car seat on the vehicle's seat.

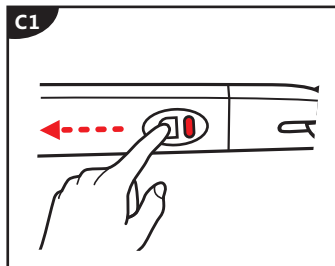


**Step 3:** Follow the B4 routine to install the baby car seat.

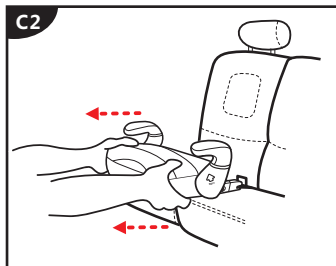


**Step 4:** Put the child in the seat and follow B4 routine.

## 6. Unlock ISOFIT

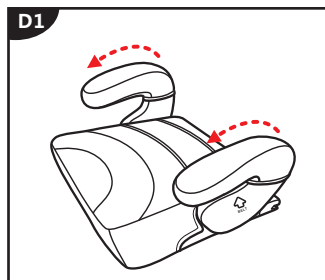


**Step 1:** Pull child seat forward and slide the locking system. When you hear "click" and it turns to red, isofix connector is released.

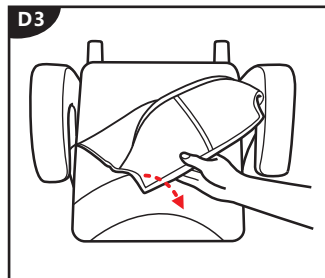
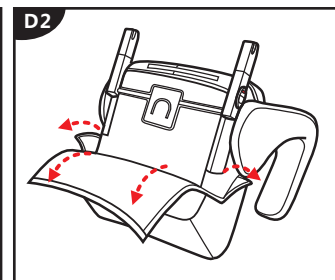


**Step 2:** Take child seat away from car seat.

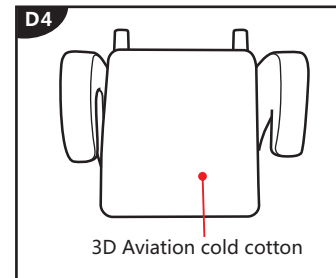
## 7. Remove the cover



**Step 1:** Pull all directions to take out the cover (D1, D4).



**Step 2:** Take off the fabric cover.



**Step 3:** No special situation, do not separate it from the seat

※ Follow in reverse order and repeat the procedure to put on the fabric cover.

## 8. Maintenance and cleaning

---

### 8.1 Daily maintenance

1. In daily use, check periodically the child seat. The child seat should be replaced after an accident.
2. Please keep this child seat in dry and ventilated place to avoid damp moldy.
3. If the child seat becomes dusty, clean the seat belt and the plastic pieces by swiping them with a damp sponge and let it dry naturally.
4. If food or drink drop accidentally on the buckle, disassemble the seat belt from the child seat and rinse it gently by warm water. Leave it dry naturally.
5. For cleaning the entire child seat fabric cover, please refer to the 8.2 washing instructions.

### 8.2 Washing instruction

Never use any solvent, chemical detergent or lubricant on any part of your child seat.



Hand wash,  
water  
temperature  
below 30°C



Do not bleach



Dry clean, any  
solvent except  
trichloroethylene



Do not tumble dry



Do not iron