

NINGBO LONGMA VEHICLE INDUSTRY CO.,LTD.

Add:No.29 kandun East Road,Cixi,Avenue,Sansizao Village,
Kandun Sub-District,Cixi City,Zhejiang Province.

Tel:0086-574-23670081 23670083

Fax:0086-0574-63288372

Http://www.loma-cardle.com

E-mail:sales@loma-cardle.com

P.C:315303

INSTRUCTION FOR USE

Congratulations on your purchase of the child seat.Please read this instruction manual carefully before use.If you have any questions concerning the use of this child seat,please do not hesitate to contact us.

CHILD RESTRAINT LM406



GROUP 0+
SUITABLE FOR CHILDREN
LESS THAN 13 KG

⚠ WARNING:DO NOT place rear-facing child seat on front seat with airbag.DEATH OR SERIOUS INJURY can occur.

Contents

1. Vital information-READ NOW.....	1-2
2. Safety instruction.....	3
3. Use safety seat in this way.....	3
4. Parts and interior equipment.....	4
5. Using the buckle.....	5
6. Adjust the harness.....	5
7. Adjust the height of the shoulder harness.....	6
8. Adjust the handle.....	7
9. Use of seat cotton pad.....	8
10. Installation of the child seat group 0+.....	8-11
11. Remove the cover.....	11-12
12. Maintenance and cleaning.....	13

NOTICE

1. This is a "Universal" child restraint, it is approved to Regulation NO.44.04 series of amendments, for general use in vehicles and it will fit most, but not all, car seats.
2. A correct fit is likely if the vehicle manufacturer has declared in the vehicle handbook that the vehicle is capable of accepting a "Universal" child restraint for this age group.
3. This child restraint has been classified as "Universal" under more stringent conditions than those which applied to earlier designs which do not carry this notice.
4. If in doubt, consult either the child restraint manufacturer or the retailer.

Only suitable if the vehicle is fitted with 3-point safety belts, Approved to UN/ECE Regulation No.16 or other equivalent standards.

1. Vital information-READ NOW

For your child's safety, please read these instructions carefully before use and keep them for future reference. Failure to follow the instructions contained in this manual could result in serious injury to your child.

1. This child seat can only be used with the harness for children less than 13 kg in weight (group 0+).
2. This instruction manual can be retained in the special space of the child seat for its life period.
3. It shall be recommended that children are not left in their child restraint system unattended.
4. Do not place rear-facing child seat on front seat with airbag. Death or serious injury can occur.
5. The child seat should be changed when it has been subject to violent stresses in an accident.
6. For the reason of safety, the child seat must be fixed inside the vehicle even if you do not put your child inside the child seat.
7. Always make sure that any straps holding the seat restraint to the vehicle shall be tight, any straps restraining the child should be adjusted to the child's body, and check that the straps shall not be twisted.

8. Do not use any load bearing contact points other than those described in the instructions and marked in the child restraint.

9. Any luggage or other objects liable to cause injuries in the event of a collision shall be properly secured.

10. The rigid items and plastic parts of a child restraint must be so located and installed that they are not liable, during everyday use of the vehicle to become trapped by a moveable seat or in a door of the vehicle.

11. To prevent from the risk of fall, your child should always be fastened.

12. It is dangerous to make any alteration or additions to the device without the approval of the competent authority, and a danger of not following closely the installation instructions provided by the child restraint manufacturer.

13. The child restraint must not be used without the cover.

14. The seat cover should not be replaced with any other than the one recommended by the manufacturer, because the cover constitutes an integral part of the restraint performance.

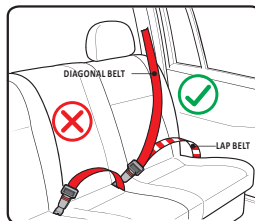
15. Before you adjust any movable or adjustable parts of your child seat, you must remove your baby from the child seat.

16. The child seat should be kept away from sunlight if the seat is not provided with a textile, otherwise it may be too hot for the child's skin.

17. Never use a second-hand product, as you can never be certain what was happened to it.

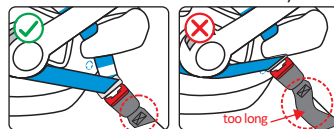
18. Please identify unsatisfactory position of the adult safety belt buckle relative to the correct point of the child safety seat, if in doubt, please contact the child seat manufacturer.

2. Safety instruction



Only suitable if the approved vehicles are fitted with 3 point safety-belts, approved to UN/ECE Regulation No.16 or other equivalent standards.

NOTICE: If the buckle strap of car seat is too long, the child restraint system can not be installed firmly. It is very dangerous. If any doubt, please consult the child restraint system manufacturer.



3. Using safety seat in this way

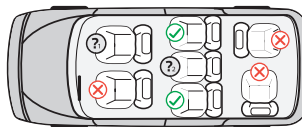
Forward facing traffic direction	Correct
Back facing traffic direction	Error
Vehicle is only fitted with 2-point safety belt	Error
Vehicle is fitted with 3-point safety belt	Correct
Seat beside the driver	Error
Rear seat	Correct
Rear middle seats Three-point Belt	Correct

3.1 Please carefully implement the Country Traffic Safety Regulations

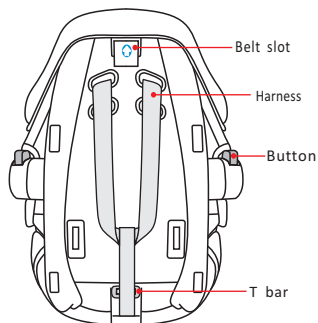
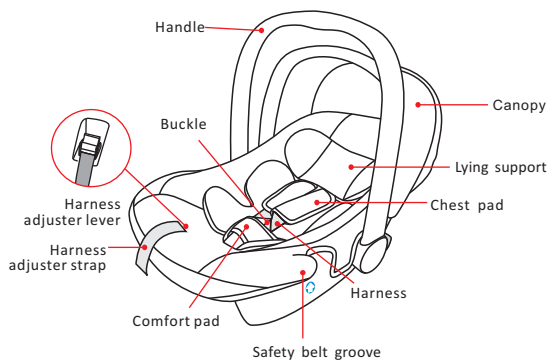
- Do not install the child safety seat at the front seat with air bag.
- Please read the instruction manual carefully that how to use the air bag.

NOTICE

- ✔ You can install this position
- ✘ Unable to install the position
- Ⓡ Do not install the child safety seat at the front seat with air bag.
- Ⓡ Only with the three point safety belt, can this location.

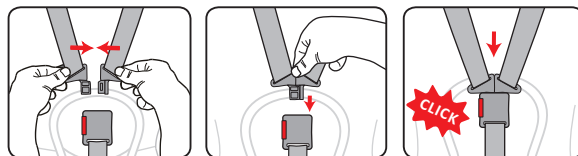


4. Parts and interior equipment



 : routing label

5. Using the buckle



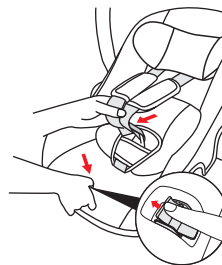
Locking Method :

Align the left and right buckle tongues to one tongue and insert into the buckle until you hear a "Click" .

Unlocking Method :

You can press the red button of the buckle the two metal sections will be pop up.

6. Adjust the harness

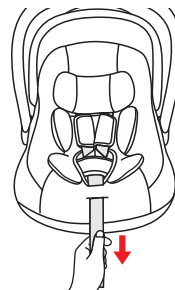


-Loosening the shoulder harness

Press the adjuster button under the cover and at the same time pull both shoulder straps forward.

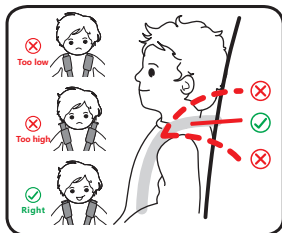
-Tightening the shoulder harness

Pull the adjuster strap until the harness is fully tightened.

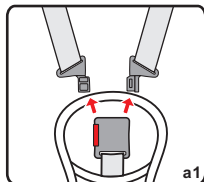


7. Adjust the height of the shoulder harness

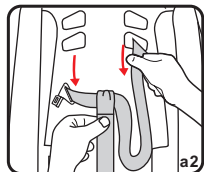
Always check that the shoulder straps are at the correct height for your child.



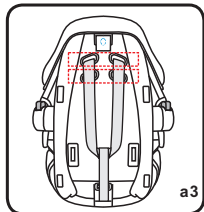
If the height of your shoulder belts in child car seat is not fit for your child, adjust the height of the shoulder belt, Please proceed as follows:



Step 1. Release the buckle(a1)

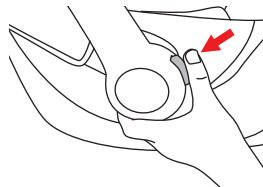


Step 2. Pull out the buckle tongues from the chest pad and the slots on the cover(a2). and the shell then thread them into the corresponding belt slots(a3).

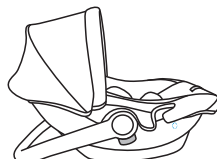


Make sure that both of the shoulder belts and chest belt go through slots at the same height, and not twisted.

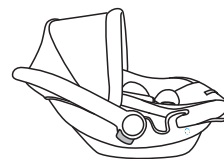
8. Adjusting the handle



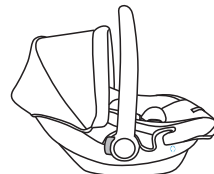
You can engage the handle in four positions:
Simultaneously press both buttons on the handle. Then whilst holding the buttons pressed turn the handle backwards or forwards until it engages in the desired position.



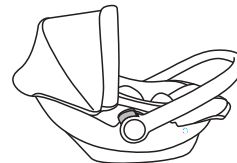
For setting the baby down safely outside the car seat



For placing your baby into the baby seat

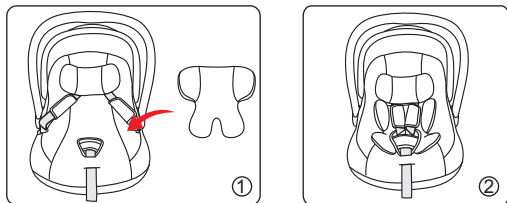


For carrying and transporting baby



For installed in the car

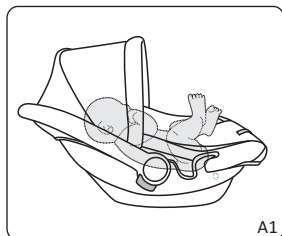
9. Use of seat cotton pad



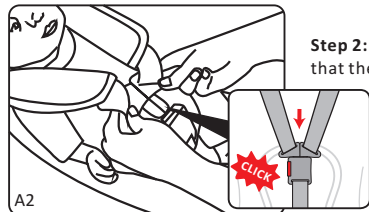
NOTICE: Please use cushion for the child less than 9kgs
Put cushion in child restraint system, and then adjust harness and cushion following the picture

10. Installation of the child seat group 0+

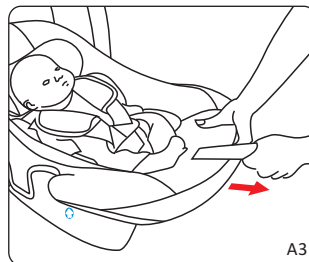
It is suitable for the weight 0-13 kg, given to children about 0-1 year old.



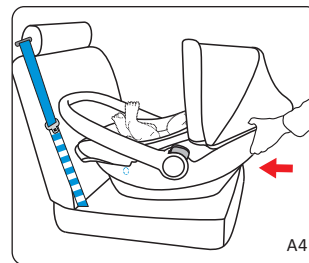
Step 1: Put the child into the seat



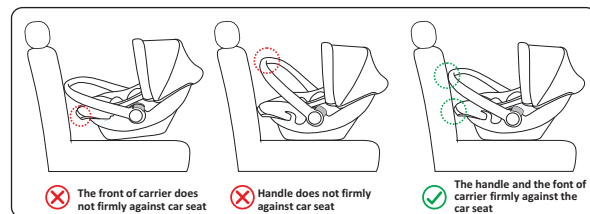
Step 2: Fasten the harness. Check that the harness does not twisted.

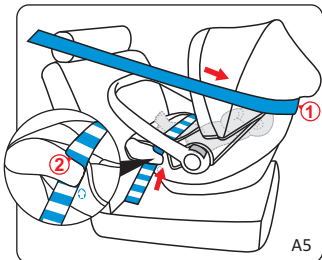


Step 3: Pull the adjuster strap until the harness is fully tightened.

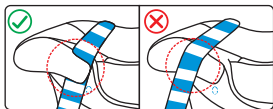


Step 4: Place the child seat on the car seat rearward-facing and make sure that the front of the child seat is firmly pressed against the car seat backrest.

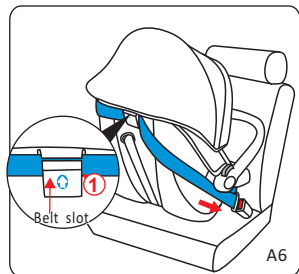




Step 5: Pull out the 3-point car seat belt, through the belt route slot of backrest follow the routine ①②③(A5、A6、A7)

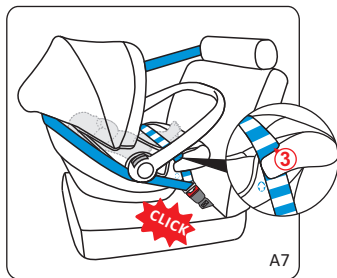


Notice: The lap belt section runs through both blue belt guides on the baby seat, lie in the flute of both of both side, see the picture

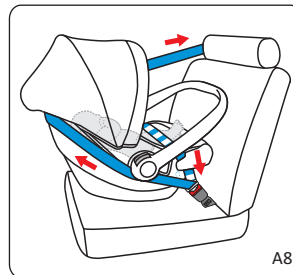


Step 6: Insert the seat belt insert into the car seat belt buckle up and hear "click"(A7)

Notice: Belt part of car safety belt , It must pass over the child's legs.

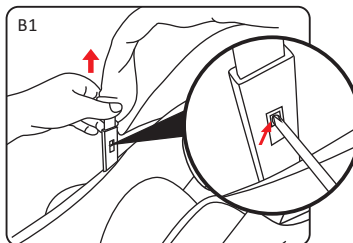


10

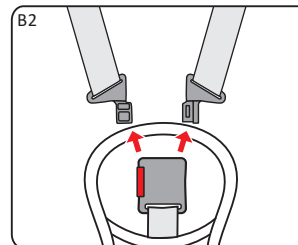


Step 7: Pull car seat belt follow the direction of red arrow and make sure the belt is tight enough(A8).

11. Remove the cover

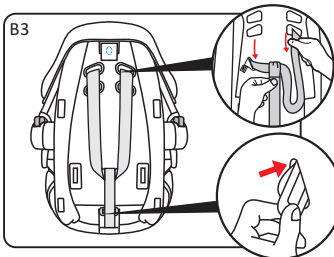


Step 1: The canopy can be removed by withdrawing the awning strip from the clamping groove with tools(B1).



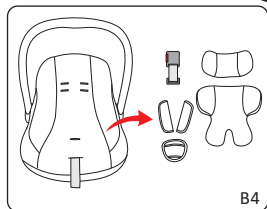
Step 2: Release the buckle(B2)

11

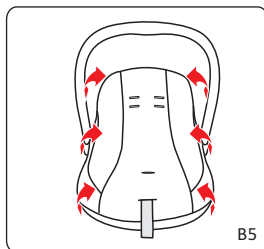


Step 3: Pull out the buckle tongues from the chestpad and the slots on the cover (B3)

Step 4: Turn the harness locking clip on their narrowest end and thread it through the slot under the bottom of the child seat. So the crotch pad and buckle as well as harness straps can be removed (B3)



Step 5: Keep the removed cushion and accessories well (B4).



Step 6: Pull all directions to take out the cover (B5).

※ Follow in reverse order and repeat the procedure to put on the fabric cover

12. Maintenance and cleaning

12.1 Daily maintenance

1. In daily use, check periodically the child seat. The child seat should be replaced after an accident.
2. Please keep this child seat in dry and ventilated place to avoid damp moldy.
3. If the child seat becomes dusty, clean the seat belt and the plastic pieces by swiping them with a damp sponge and let it dry naturally.
4. If food or drink drop accidentally on the buckle, disassemble the seat belt from the child seat and rinse it gently by warm water. Leave it dry naturally.
5. For cleaning the entire child seat fabric cover, please refer to the 12.2 washing instructions.

12.2 Washing instruction

Never use any solvent, chemical detergent or lubricant on any part of your child seat.

